

Prospectus for the investment group Senior Secured Loans (CHF hedged)

*Investment group in the “alternative investments” category in accordance
with Art. 53, cl. 3c BVV 2*

The investment group may have a higher risk than traditional investment groups.

Swiss Life Investment Foundation

Contents

1	General information	54
2	Investment Concept	65
2.1	Asset class.....	65
2.2	Investment objective.....	65
2.3	Investment guidelines	65
3	Asset selection procedure	87
4	Organisation	87
4.1	General Meeting of Investors.....	87
4.2	Board of Trustees	87
4.3	Management body	98
4.4	Portfolio and asset manager	98
4.5	Statutory auditor	98
4.6	Custodian bank.....	98
4.7	Administrator	98
5	Issue and redemption of entitlements	109
5.1	Issue of entitlements.....	109
5.2	Issue price.....	109
5.3	Redemption of entitlements	109
5.4	Redemption price	109
5.5	Issue and redemption dates.....	1140
5.6	Settlement.....	1140
5.7	Contributions in kind	1140
6	Net asset value	1241
7	Fee structure	1312
7.1	Management fee	1312
7.2	Performance fee.....	1312
7.3	Other costs and expenses	1312
7.4	Issuing commission.....	1312
7.5	Redemption commission.....	1312
8	Risk information.....	1413
8.1	Risks in connection with the credit quality of the debtor	1413
8.2	Interest rate change risks	1413
8.3	Risks arising from restricted liquidity	1413
8.4	Risks in connection with the legislation on occupational provisions (approval of high yield bonds).....	1413
8.5	Risks in connection with the valuation of the underlying assets	1413

8.6 Legal risks	1413
8.7 Political risks	1514
8.8 Tax risks	1514
9 Taxes	1615
10 Further information	1716
<u>1 General information</u>	4
<u>2 Investment Concept</u>	5
<u>2.1 Asset class</u>	5
<u>2.2 Investment objective</u>	5
<u>2.3 Investment guidelines</u>	5
<u>3 Asset selection procedure</u>	7
<u>4 Organisation</u>	7
<u>4.1 General Meeting of Investors</u>	7
<u>4.2 Board of Trustees</u>	7
<u>4.3 Management body</u>	8
<u>4.4 Portfolio and asset manager</u>	8
<u>4.5 Statutory auditor</u>	8
<u>4.6 Custodian bank</u>	8
<u>4.7 Administrator</u>	8
<u>5 Issue and redemption of entitlements</u>	9
<u>5.1 Issue of entitlements</u>	9
<u>5.2 Issue price</u>	9
<u>5.3 Redemption of entitlements</u>	9
<u>5.4 Redemption price</u>	9
<u>5.5 Issue and redemption dates</u>	10
<u>5.6 Settlement</u>	10
<u>5.7 Contributions in kind</u>	10
<u>6 Net asset value</u>	11
<u>7 Fee structure</u>	12
<u>7.1 Management fee</u>	12
<u>7.2 Performance fee</u>	12
<u>7.3 Other costs and expenses</u>	12
<u>7.4 Issuing commission</u>	12
<u>7.5 Redemption commission</u>	12
<u>8 Risk information</u>	13
<u>8.1 Risks in connection with the credit quality of the debtor</u>	13

<u>8.2</u>	<u>Interest rate change risks</u>	<u>13</u>
<u>8.3</u>	<u>Risks arising from restricted liquidity</u>	<u>13</u>
<u>8.4</u>	<u>Risks in connection with the legislation on occupational provisions (approval of high yield bonds)</u>	<u>13</u>
<u>8.5</u>	<u>Risks in connection with the valuation of the underlying assets</u>	<u>13</u>
<u>8.6</u>	<u>Legal risks</u>	<u>13</u>
<u>8.7</u>	<u>Political risks</u>	<u>14</u>
<u>8.8</u>	<u>Tax risks</u>	<u>14</u>
<u>9</u>	<u>Taxes</u>	<u>15</u>
<u>10</u>	<u>Further information</u>	<u>16</u>

In case of doubt, the German version shall take precedence.

1 General information

The “Swiss Life Investment Foundation” is a foundation set up in 2001 in accordance with Art. 80 et seq. of the Swiss Civil Code and Art. 53g et seq. of the Federal Law on Occupational Retirement, Survivors' and Disability Pensions Plans (BVG) by the former Swiss Life Insurance and Pension Company, now Swiss Life Ltd.

The Swiss Life Investment Foundation, based in Zurich, is subject to supervision by the Occupational Pension Supervisory Commission (OPSC). The Swiss Life Investment Foundation is designed for tax-exempt occupational benefits institutions domiciled in Switzerland. Its purpose is the collective investment and the management of the pension assets entrusted to it by investors.

The Swiss Life Investment Foundation is a member of KGAST (Conference of Managers of Investment Foundations), which obligates its members to meet high quality standards and comprehensive transparency requirements. The highest governing body of the investment foundations, the General Meeting of Investors, provides all investors with the opportunity to exercise direct influence through their participation rights. The Swiss Life Investment Foundation is comprised of several investment groups that invest in various asset classes, such as equities, bonds, BVG mixed assets, real estate, mortgages, alternative investments and infrastructure. ~~BVG mixes and real estate.~~

This prospectus is for the Senior Secured Loans (CHF hedged) investment group. This investment group is part of the “alternative investments” category in accordance with Art. 53, cl. 3c BVV2.

2 Investment Concept

2.1 Asset class

The Senior Secured Loans (CHF hedged) investment group of the Swiss Life Investment Foundation primarily invests in senior secured loans. Senior secured loans, also called bank loans, are priority claims against companies that have a sub-investment grade or no rating. They are not registered and they are not traded on an exchange. Trading takes place over the counter on the secondary market between institutional investors. The coupons of senior secured loans consist of an interest component and a credit risk component. The interest component is variable and linked to a base rate. The amount of the risk premium depends on the debtor's risk profile.

2.2 Investment objective

The investment policy aims to achieve long-term capital growth while also diversifying risk. The primary investment objective is to earn income from investments in senior secured loans with minimal price volatility and a low interest rate duration. The investment group also seeks a broad diversification of risk by company and sector.

2.3 Investment guidelines

1. The investment group's assets are mainly invested in unsubordinated senior secured loans of companies in developed countries (OECD member states).
2. A maximum of up to 15% may also be held in other debt instruments or debentures issued by public and private debtors (e.g. high yield bonds), subordinated senior secured loans, collateral loan obligations and equities that result from the conversion of an investment in senior secured loans, whereby this restriction does not apply to investments in debt instruments issued by governments and government-affiliated debtors that are considered cash equivalents (a term of not more than three months). Equities that result from the conversion of an investment in senior secured loans often do not fulfil the criterion of being listed on a stock exchange or traded on another regulated market open to the public. These assets must therefore be sold in a timely manner.
3. The investments pursuant to no. 1 and 2 are subject to the following bandwidths:
 - North America: 50%–100%
 - Europe (excl. Switzerland): 0%–60%
 - Switzerland: 0%–10%
 - Asia Pacific: 0%–10%
 - Other: 0%–10%
4. In the interests of the investors, the investment group may, in justified exceptional cases, temporarily invest its assets in cash, cash equivalents and money market instruments.
5. Foreign currency risks are at least 90% hedged against Swiss francs.
6. No derivatives are used at the investment group level. Any derivatives (including for currency hedging) are used solely at the target fund level.
7. Investment style: active
8. The investment group may hold senior secured loans and assets pursuant to no. 2 above from at least 50 different debtors, provided there is an appropriate distribution across various industrial sectors.
9. A maximum of 5% of the investment group's assets may be invested in senior secured loans or assets pursuant to no. 2 above issued by the same debtor, with the exception of debt instruments issued by governments and government-affiliated debtors.

10. A maximum of 25% of the investment group's assets may be invested in senior secured loans or assets pursuant to no. 2 in the same industrial sector; this restriction does not apply to investments in debt instruments issued by governments and government-affiliated debtors.
11. The individual positions must have a rating of between "Baa1" and "B3" from Moody's or between "BBB+" and "B–" from Standard & Poor's at the time of their acquisition. The investment group may also hold positions that have been downgraded after acquisition to less than "B3" according to Moody's or "B–" according to Standard & Poor's, provided this is in the investors' interests. This restriction does not apply to debt instruments issued by governments and government-affiliated debtors that have a higher rating. In the case of different ratings according to Standard & Poor's and Moody's that are more than two rating levels apart, the lower of the two ratings shall apply. The active acquisition of positions that have a rating of less than "B–" according to Standard & Poor's or lower than "B3" according to Moody's is not permitted. Positions issued by debtors that do not have a rating from Standard & Poor's or Moody's may be acquired on the basis of an internal credit analysis of the asset manager, provided this is in the investors' interests.
12. The investment group generally invests exclusively in collective investments. This is subject, as a rule, to an individual limit of 20%, with the exception of collective investment instruments that were issued by a Swiss investment foundation or are supervised by FINMA or approved by FINMA for distribution in Switzerland. In addition, the part of a foreign collective investment may be more than 20% of the investment group's assets, provided this investment has been approved by a foreign supervisory authority with which FINMA has concluded a cooperation and information exchange agreement (Art. 120, cl. 2e CISA). Fund-of-funds products are also permitted, provided they do not, in turn, include any fund-of-funds products. The collective investments must comply with these investment guidelines.

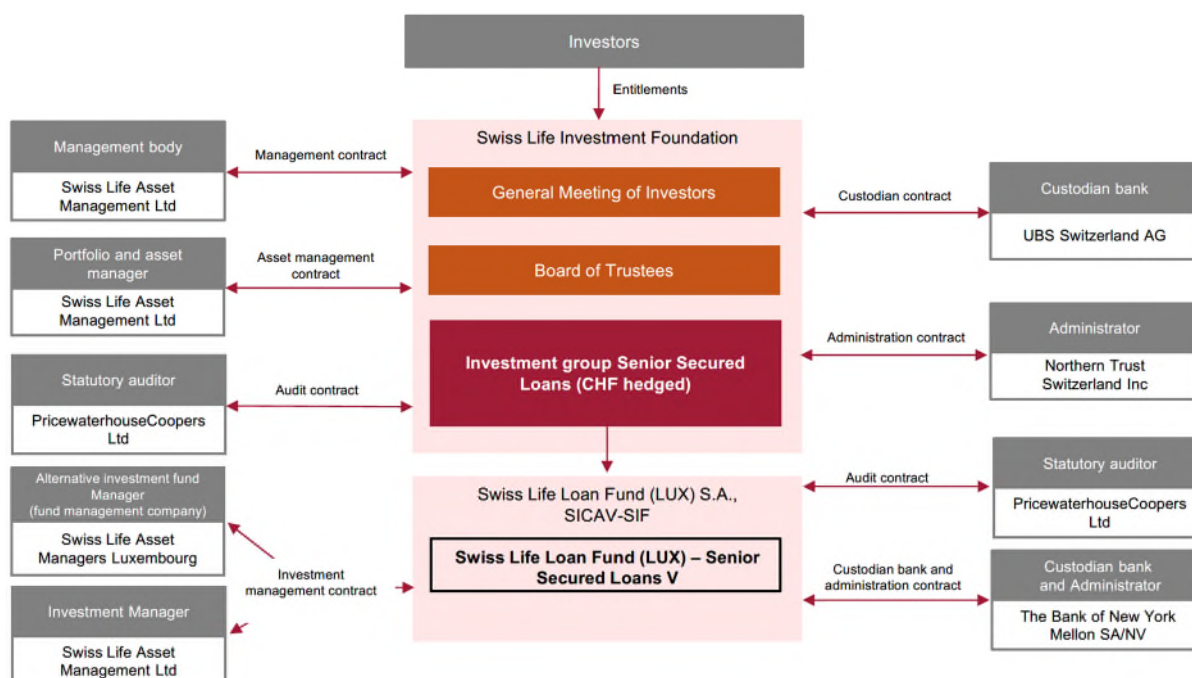
3 Asset selection procedure

As part of the asset selection, the portfolio manager (at the target fund level) conducts an analysis that, among other things, takes account of the following criteria:

- Corporate strategy
- Historical performance of the company
- Financial figures for the company, with a focus on financial stability (capital structure, cash flows, interest burden, debt level, etc.)
- Analysis of the industry or industries
- Quality of the management and an analysis of the ownership structure
- Diversification of revenue by customers, regions and sectors

Only the senior secured loans of debtors whose quality is assessed to be suitable are used.

4 Organisation



4.1 General Meeting of Investors

The highest governing body of the foundation is the General Meeting of Investors, which comprises representatives of all investors. The General Meeting of Investors meets when required by the foundation regulations, but at least once per year.

For the duties and powers of the General Meeting of Investors, please see the Articles of Association and the foundation regulations of the Swiss Life Investment Foundation.

4.2 Board of Trustees

The Board of Trustees is the highest executive body. It has all the duties which are not expressly within the remit of the General Meeting of Investors, the statutory auditor or the supervisory authority. The

Board of Trustees represents the foundation to external parties. The Board of Trustees comprises a minimum of five expert members, who must be natural persons. The members of the Board of Trustees are elected by the General Meeting of Investors. The founding company, its legal successor and persons with economic ties to the founding company, may be represented by no more than a third of the Board of Trustees. The founding company has the right to submit nominations for the election of members of the Board of Trustees. Persons entrusted with the foundation's administration or asset management may not be elected to the Board of Trustees. If the Board of Trustees delegates management to third parties, they may not be represented on the Board of Trustees.

4.3 Management body

The management body of the Swiss Life Investment Foundation is responsible for the day-to-day business of the foundation within the framework of the Articles of Association, the foundation regulations, the investment guidelines and any other special regulations, directives and ordinances issued by the Board of Trustees. It also executes performance controlling and coordinates cooperation with the auditor and the supervisory authority.

4.4 Portfolio and asset manager

Portfolio and asset management for the investment group have been delegated to Swiss Life Asset Management Ltd. Swiss Life Asset Management Ltd is responsible for the investments and management of the investment group's assets.

4.5 Statutory auditor

PricewaterhouseCoopers Ltd ~~(PwC)~~ has been appointed statutory auditor for the Investment Foundation. The duties of the statutory auditor are defined in Art. 10 of the Ordinance on Investment Foundations (Verordnung über die Anlagestiftungen, ASV). They include reviewing compliance with the provisions of the Articles of Association, the foundation regulations and the investment guidelines.

4.6 Custodian bank

The custodian bank for the investment group is UBS Switzerland AG.

4.7 Administrator

The administrator is ~~Northern Trust Switzerland Inc~~ Northern Trust Global Services SE, Leudelange, Luxembourg, Basel branch office. It is responsible for calculating the investment group's net asset value and for its accounting.

5 Issue and redemption of entitlements

5.1 Issue of entitlements

Investors are, as a general rule, eligible to acquire as many entitlements as they wish within the framework set by the foundation regulations and in accordance with their own investment guidelines.

Entitlements are acquired through the issue of new entitlements by the foundation. Free trading in entitlements is not permitted.

Entitlements are issued by means of a subscription ~~notice~~request submitted up to two bank working days before the trading day (see the definition of “trading day” in section 5.5 below).

The subscription ~~notice~~request must be submitted to the Swiss Life Investment Foundation in writing by the deadline specified above. Subscription ~~notices~~requests submitted to the Swiss Life Investment Foundation after this deadline will automatically be postponed until the next ~~issue date~~trading day.

5.2 Issue price

Entitlements are issued at the net asset value valid at the issue date. The equivalent value of the issue price must generally be paid in cash. With the agreement of the Investment Foundation, it may also be provided as a contribution in kind at any time.

5.3 Redemption of entitlements

Entitlements are sold through the redemption of existing entitlements by the foundation. Free trading in entitlements is not permitted.

Redemptions are generally made once per month. Entitlements are redeemed by means of a redemption notice submitted up to five bank working days before the trading day. The redemption notice must be submitted to the Swiss Life Investment Foundation management in writing by the deadline specified above.

Investors whose redemption volume exceeds CHF 5 million shall (in deviation from the above provision) be obliged to provide 30 (calendar) days’ notice before the trading day of their redemption notice.

Redemption notices received by the management of the Swiss Life Investment Foundation after the deadlines specified in cl. 2 and 3 shall automatically be postponed until the next redemption date.

If the amount of the redemption for a specific redemption date exceeds 4% of the investment group’s assets, the management body can, at its discretion and in the best interests of current investors, reduce or postpone the redemption. In doing so, it must adhere to the principle of the equal treatment of investors.

In extraordinary circumstances, the Board of Trustees can postpone the redemption of entitlements in all or individual investment groups. In such a case it informs all investors concerned. In justified cases, entitlements can be assigned among investors, subject to the prior consent of ~~the~~ the management~~management body~~. The postponement may not be for more than two years. The investment group will be liquidated after two years.

5.4 Redemption price

The redemption price of each entitlement is the net asset value on the date of redemption.

5.5 Issue and redemption dates

Entitlements are issued and redeemed monthly, generally on the last bank working day of the month (trading day).

5.6 Settlement

Subscriptions are settled within 10 bank working days of the relevant trading day. Redemptions are settled within 22 bank working days of the relevant trading day.

5.7 Contributions in kind

The management body may at any time allow an investor to make a contribution in kind for the investment rather than a cash payment. A contribution in kind is only permitted if the senior secured loans or debt instruments that are contributed are consistent with the investment policy and the investment guidelines and do not affect the interests of the other investors.

The fair value of the contribution in kind must:

- a. be determined in accordance with the expected income or cash flow, taking account of a capitalisation rate commensurate with the risk;
- b. be estimated by comparing it with similar assets; or
- c. be calculated in accordance with other generally recognised methods.

This value must be estimated by at least one expert who is independent and qualified.

6 Net asset value

The authoritative net asset value of the portfolio is the consolidated value of the assets held in the portfolio, less the total amount of consolidated liabilities and provisions. The net asset value of the portfolio is calculated monthly for the last trading day of the calendar month, with the exception of Swiss public holidays and days on which the stock exchanges and markets in the investment group's main investment countries are closed. The basis of the calculation is the liquid assets held at the investment group level, taking account of any fees and withholding tax as well as the valuations of the investments. ~~The net asset value is calculated monthly.~~

7 Fee structure

The following costs and expenses result in a reduction of the returns that can be achieved on the entitlements by investors.

7.1 Management fee

At the investment group level, the following management fee is charged to the net assets for the management and administration of the foundation and the investment group:

Standard tranche: 0.12% (excl. VAT)

PM tranche¹: 0.00% (excl. VAT)

~~¹Available only to investors who have concluded an asset management mandate or another remunerated financial services contract with Swiss Life Asset Management Ltd or another Swiss Life Group company.~~

The full costs, including the underlying target funds ("combined [synthetic] Total expense ratio TER_{KGAST}"), are disclosed annually on a retrospective basis in the investment foundation's annual report.

7.2 Performance fee

There are no return-based fees.

7.3 Other costs and expenses

In addition to the above fees, there may be additional costs, expenses and taxes at the investment group level and in the underlying target investments. The actual costs of the target fund are included in the annual report for the investment foundation.

7.4 Issuing commission

There is no issuing commission.

7.5 Redemption commission

There is no redemption commission.

¹ Available only to investors who conclude a special agreement with Swiss Life Asset Management Ltd or for existing asset management clients of Swiss Life Asset Management Ltd.

8 Risk information

The price at which entitlements are redeemed depends on, among other things, the future performance of the investment group's investments. If the performance is unfavourable, investors risk losing some or all of their invested capital. Because of its special focus, it is recommended that the investment group be used solely for diversification purposes.

Investments in senior secured loans entail the following risks in particular:

8.1 Risks in connection with the credit quality of the debtor

The investment group primarily invests in senior secured loans issued by debtors who have a sub-investment grade or no rating. Compared to investment grade debtors, these debtors have a much higher likelihood of defaulting. Investors must therefore expect individual instruments to default and therefore reduce the returns of the investment group. In some years, this can lead to a negative return for the investment group.

8.2 Interest rate change risks

Rising interest rates generally lead to losses in value on fixed income instruments; by contrast, falling interest rates generally lead to increases in value on fixed income instruments. In the case of variable-rate instruments, such as senior secured loans, the fluctuations in value as a result of interest rate changes are generally lower. However, investors in the investment group can still experience losses in value as a result of interest rate changes.

8.3 Risks arising from restricted liquidity

Senior secured loans are traded over the counter on the secondary market and not on a stock exchange. They are usually traded by institutional investors. Compared to traditional corporate bonds, the liquidity of senior secured loans is lower. This can lead to a higher bid-ask spread and thus to a lower sales price. In an extreme scenario, the liquidity can be severely restricted, as a result of which it may not be possible to sell individual senior secured loans, or this may only be possible at a significant discount. For this reason, it is possible that the liquidity of the investment group may be restricted and it may be necessary to postpone the redemption of units.

8.4 Risks in connection with the legislation on occupational provisions (approval of high yield bonds)

Investors are responsible for obtaining approval from the relevant corporate body (e.g. Board of Trustees, Investment Committee, etc.) for the use of high yield bonds with respect to risk capacity and ensuring that they do not jeopardise the purpose of the pension fund, and for defining corresponding principles with respect to the investment principle, risk/return ratio, correlation with the overall portfolio, investment forms, valuation principles, liquidity and costs.

8.5 Risks in connection with the valuation of the underlying assets

Because senior secured loans are not traded on a stock market, the valuations of the senior secured loans are based largely on price indicators by market participants provided by external providers. As a result, the net asset value of the investment group may deviate from the effective intrinsic value or the value of the proceeds.

8.6 Legal risks

The Senior Secured Loans (CHF hedged) investment group offered by the Swiss Life Investment Foundation invests in senior secured loan funds to which Swiss law does not apply and whose jurisdiction is outside Switzerland. As a result, the rights and obligations of the Senior Secured Loans

(CHF hedged) investment group offered by the Swiss Life Investment Foundation may deviate from the standards that apply in Switzerland. In particular, the associated level of investor protection may be weaker than for comparable investments under Swiss law and with jurisdiction in Switzerland.

8.7 Political risks

It is possible that investments in the Senior Secured Loans (CHF hedged) investment group offered by the Swiss Life Investment Foundation may be or become subject to political risks, e.g. risks as a result of nationalisations, expropriations, confiscatory taxes, devaluations of currencies, foreign exchange controls, social or political instability, military conflicts or government restrictions.

8.8 Tax risks

There is a risk that future, unforeseeable tax consequences in individual countries and country-specific regulations will have a negative impact on the returns of the Senior Secured Loans (CHF hedged) investment group. The tax burden may already be known when the investment is made and consciously accepted as part of the investment decision, or it may become clear over the course of the investment as a result of changes in the relevant domestic or foreign legislation and/or taxation. Neither the Swiss Life Investment Foundation nor the asset manager is liable for any tax consequences.

9 Taxes

Because its income and assets are intended solely for occupational pensions, the Investment Foundation is exempted from direct federal, cantonal and municipal taxes (Art. 80, cl. 2 of the Federal Law on Occupational Retirement, Survivors' and Disability Pension Plans of 25 June 1982 [BVG] in conjunction with Art. 23, cl. 1 let. d of the Federal Law on the Harmonisation of Direct Taxation at Cantonal and Communal Levels of 14 December 1990 [DTHA] and Art. 56 let. e of the Federal Law on Direct Federal Tax of 14 December 1990 [DBG]).

Should the Board of Trustees decide to distribute income, the distribution is without deduction of Swiss federal withholding tax. The Investment Foundation is entitled to claim reimbursement of withholding tax incurred by an investment group.

10 Further information

Investment category

Senior secured loans (Art. 53, cl. 3c BVV 2). The Senior Secured Loans (CHF hedged) investment group is a collective investment (Art. 56 BVV 2).

Swiss security number

Standard tranche: 51 215 713

PM tranche^{2,24} 51 215 723

²⁴ ~~Available only to investors who have concluded an asset management mandate or another remunerated financial services contract with Swiss Life Asset Management Ltd or another Swiss Life Group company.~~

Accounting year

1 October to 30 September

Accounting unit

Swiss francs (CHF)

Distribution policy

The investment group's net income is generally reinvested annually. The Board of Trustees can decide to distribute net income to investors in proportion to the number of entitlements they hold.

Investor information/publications

The Articles of Association, foundation regulations, investment guidelines, factsheets, annual and quarterly reports and other key investor information can be found at www.swisslife.ch/investmentfoundation.

Amendments and entry into force

Amendments to the prospectus are requested by the management body and approved by the Board of Trustees. The amended prospectus is immediately sent to all investors in the investment group in a suitable manner.

This prospectus replaces the one from ~~31 January 2020~~30 June 2022 and enters into force on ~~30 June 2022~~1 January 2023.

² Available only to investors who conclude a special agreement with Swiss Life Asset Management Ltd or for existing asset management clients of Swiss Life Asset Management Ltd.